

THE INFORMATION SHOWN ON THIS TAX MAP IS DERIVED FROM GROUND AND AERIAL SURVEYS, RECORDED MAPS, DEEDS AND



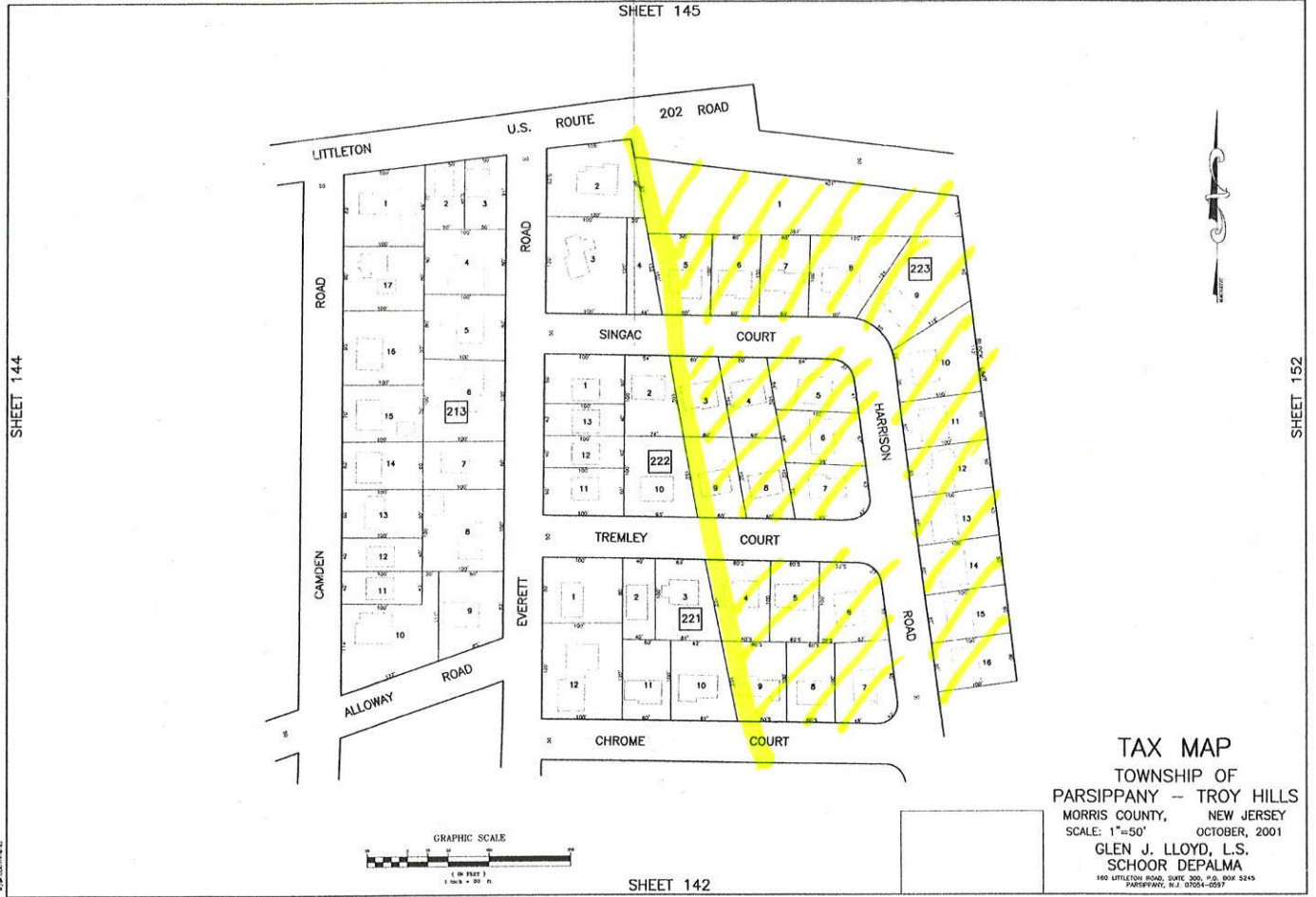
SHEET 136

TAX MAP
 TOWNSHIP OF
 PARSIPPANY — TROY HILLS
 MORRIS COUNTY, NEW JERSEY
 SCALE: 1"=50' OCTOBER, 2001
 GLEN J. LLOYD, L.S.
 SCHOOR DEPALMA
 150 LITTLETON ROAD, SUITE 300, P.O. BOX 5245
 PARSIPPANY, N.J. 07054-0597

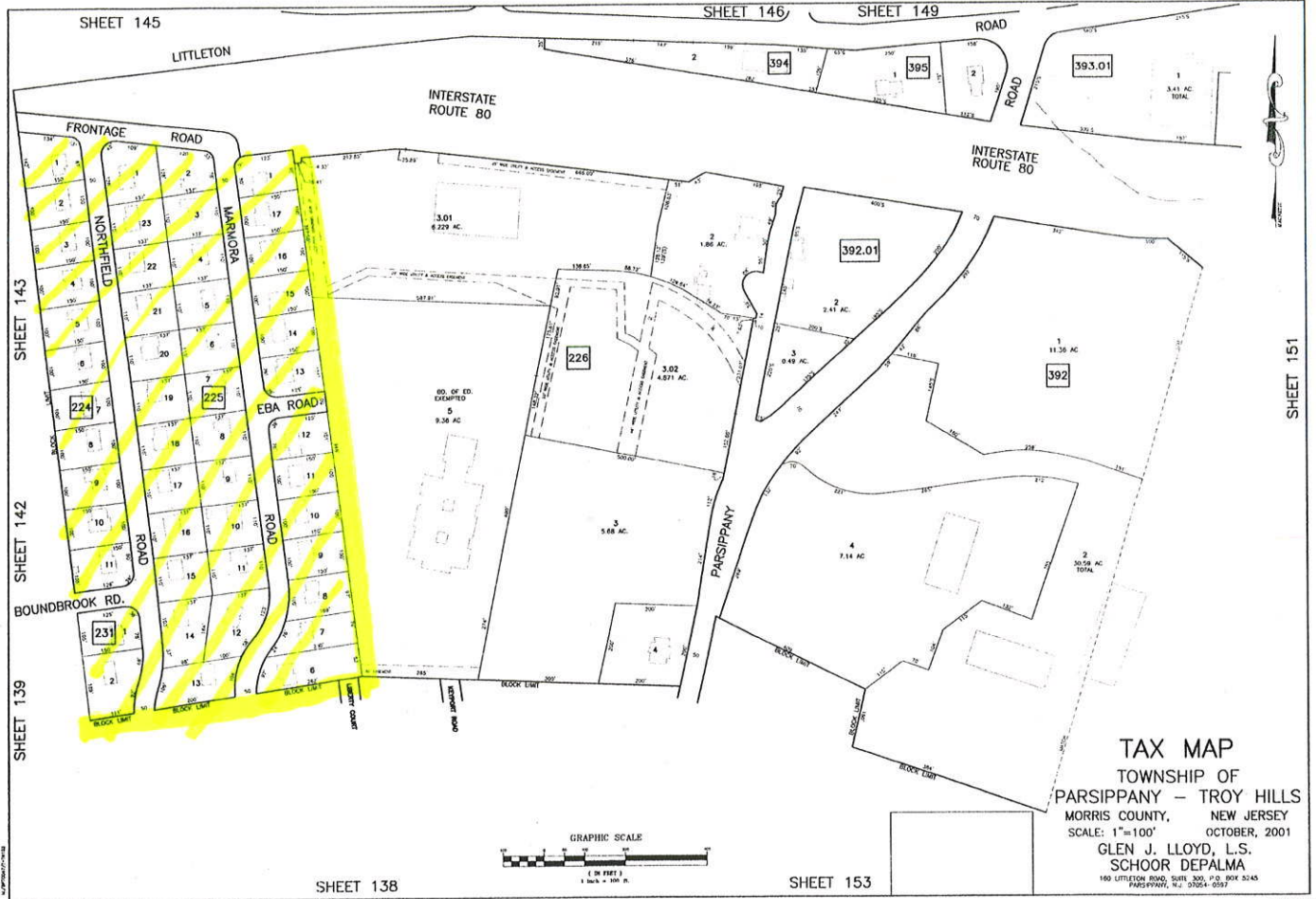
SHEET 136



SHEET 139



TAX MAP
 TOWNSHIP OF
 PARSIPPANY - TROY HILLS
 MORRIS COUNTY, NEW JERSEY
 SCALE: 1"=50' OCTOBER, 2001
 GLEN J. LLOYD, L.S.
 SCHOOOR DEPALMA
100 LITTLETON ROAD, SUITE 300, P.O. BOX 2445
 PARSIPPANY, N.J. 07054-0245



SHEET 143
SHEET 142
SHEET 139

SHEET 145

SHEET 146

SHEET 149

SHEET 138

SHEET 153

SHEET 151

TAX MAP
 TOWNSHIP OF
 PARSIPPAMY - TROY HILLS
 MORRIS COUNTY, NEW JERSEY
 SCALE: 1"=100' OCTOBER, 2001
 GLEN J. LLOYD, L.S.
 SCHOOR DEPALMA
 160 LITTLETON ROAD, SUITE 300, P.O. BOX 5145
 PARSIPPAMY, N.J. 07654-0157